



ARTISAN Controls Corporation
5700 Controller
Capacitive Touch Through Glass

800x480 LCD Display	6 - 10 Amp Relay Outputs
USB Port & WiFi	6 - 12V DC Outputs
8 - Analog Inputs	2 - 0-10V Analog Outputs
6 - Contact Inputs	



The **NEW Artisan 5700 “Capacitive Touch Through Glass” Controller** was designed to revolutionize the Food Equipment Industry. Made in the **USA**, this amazing Cooking/Frying Controller consists of two independent circuit boards connected via CAN to facilitate ease of mounting. The outer user interface board consists of a 7" color LCD display and can be ordered with either a capacitive touch or resistive touch system. The second board is the input/output (IO) board which incorporates the power supply source for both boards and

OUTPUTS: (6) 10 Amp Relays, (6) 12V Digital, and (2) 0-10V Analog Outputs
INPUTS: (8) Analog (6 universal temperature), and (6) Contact Inputs

more than most OEMs would require for their equipment. These two boards are connected with a single automotive-style (CAN) 4 conductor cable which provides power to the user interface and enables communications between the two circuit boards.

Artisan’s Capacitive Touch Through Glass Technology allows the user to operate the controller through glass or plastic up to 10 mm thick even while wearing thick heat resistant kitchen gloves.

The powerful graphics capabilities of the **5700** allow display of vivid **color slide show images and text** to assist with the use, maintenance and servicing of the equipment. The **5700** controller also allows importing of color icons and editable recipes to ensure proper food identification, preparation and product consistency.

Preparing a fryer filter for use ...



Recipe Selection with Icons ...



Visit our website at: www.artisancontrols.com

Notice: Artisan Controls Corporation assumes no responsibility for customers applications or product design. The information and data contained herein is the sole and exclusive property of Artisan Controls Corporation. Any duplication, misuse, or conversion of this information without the express written consent of Artisan Controls Corporation is illegal and will result in damages including court costs and attorney fees being assessed against the party misusing this property



ADDITIONAL SCREEN EXAMPLES



PROCESS REMINDERS -

Screens with text and or images can be used to remind operators of the proper sequence and items to check



FRYING LOG -

Records when the recipe was cooked, how long it was cooked for, whether the cooking cycle was completed, and the average temperature. Also records the filtering process and other maintenance operations



RECIPE NAME ENTRY -

Uses standard "querty" keyboard layout to maximize user familiarity and minimize mistakes



USER FRIENDLY EDITING FEATURES -

Plus / minus buttons with audible feedback are utilized to edit or adjust temperatures, times, and other values.

Visit our website at: www.artisancontrols.com

Notice: Artisan Controls Corporation assumes no responsibility for customers applications or product design. The information and data contained herein is the sole and exclusive property of Artisan Controls Corporation. Any duplication, misuse, or conversion of this information without the express written consent of Artisan Controls Corporation is illegal and will result in damages including court costs and attorney fees being assessed against the party misusing this property



SPECIFICATIONS:

RECIPES: Nameable recipes with configurable icons, 8 built-in icons and 8 user importable..

LOGS: Activity log saves date, time, recipe name, and average temperature. Machine log saves date, time, and multiple system events such as probe failures, security changes, recipe editing, system wide imports and exports.

IMAGES: 8Mb direct flash image storage capable of up to 20 480x270 images for operational and cleaning instructions, one 400x240 pixel background image and one factory customizable logo for end customer branding, and up to 8 64x64 pixel user imported recipe icons. Optional microSD card for additional storage.

5700UI - User Interface

DIMENSIONS: 9.25" x 4.63" printed circuit board, display side extends forward 0.63" (with cap touch), circuit side extends rearwards 1" maximum.

DISPLAY: 7" diagonal color LCD display with touchscreen operation and intuitive window designs, 800 x 480 pixels with 64k colors.

POWER: 12VDC from Input/Output Board.

COMMUNICATIONS: CAN bus to/from I/O board, USB for flash drives, microSD card connector, expansion connector for WiFi connection.

5700IO - Input/Output Board

DIMENSIONS: 7.25" x 4.63" printed circuit board, 1" tall maximum.

POWER: Universal 100 – 240V AC 50/60Hz operating voltage, 0.6A maximum.

ANALOG INPUTS: Six universal temperature inputs for J or K thermocouple, 100 ohm or 1k ohm RTD's, or thermistors. Two variable DC inputs 0-10V DC maximum with variable gain.

DIGITAL INPUTS: Six 12V DC contact inputs.

RELAY OUTPUTS: Six 10 Ampere SPNO contact outputs rated:

100,000 cycles at 2.5A @ 250VAC (inductive, $\cos(\phi) = 0.4$)

50,000 cycles at 10A @ 250VAC (resistive, $\cos(\phi) = 1.0$)

DIGITAL OUTPUTS: Six 12V DC outputs suitable for SSR's or small relays. 30mA max per output.

ANALOG OUTPUTS: Two 0-10V analog outputs.

SPECIFICATIONS © AND REVISION: January 2, 2018

Conforms to UL STDS 60730-1 & 60730-2-9

Certified to CSA STDS E60730-1 & E60730-2-9



IMPORTANT NOTICE: This controller should only be used in a system incorporating an independently operating high temperature limiting device which will safely disable the heaters, thereby preventing damage in the event of failure, malfunction, or normal wear-out of this device

Visit our website at: www.artisancontrols.com

Notice: Artisan Controls Corporation assumes no responsibility for customers applications or product design. The information and data contained herein is the sole and exclusive property of Artisan Controls Corporation. Any duplication, misuse, or conversion of this information without the express written consent of Artisan Controls Corporation is illegal and will result in damages including court costs and attorney fees being assessed against the party misusing this property

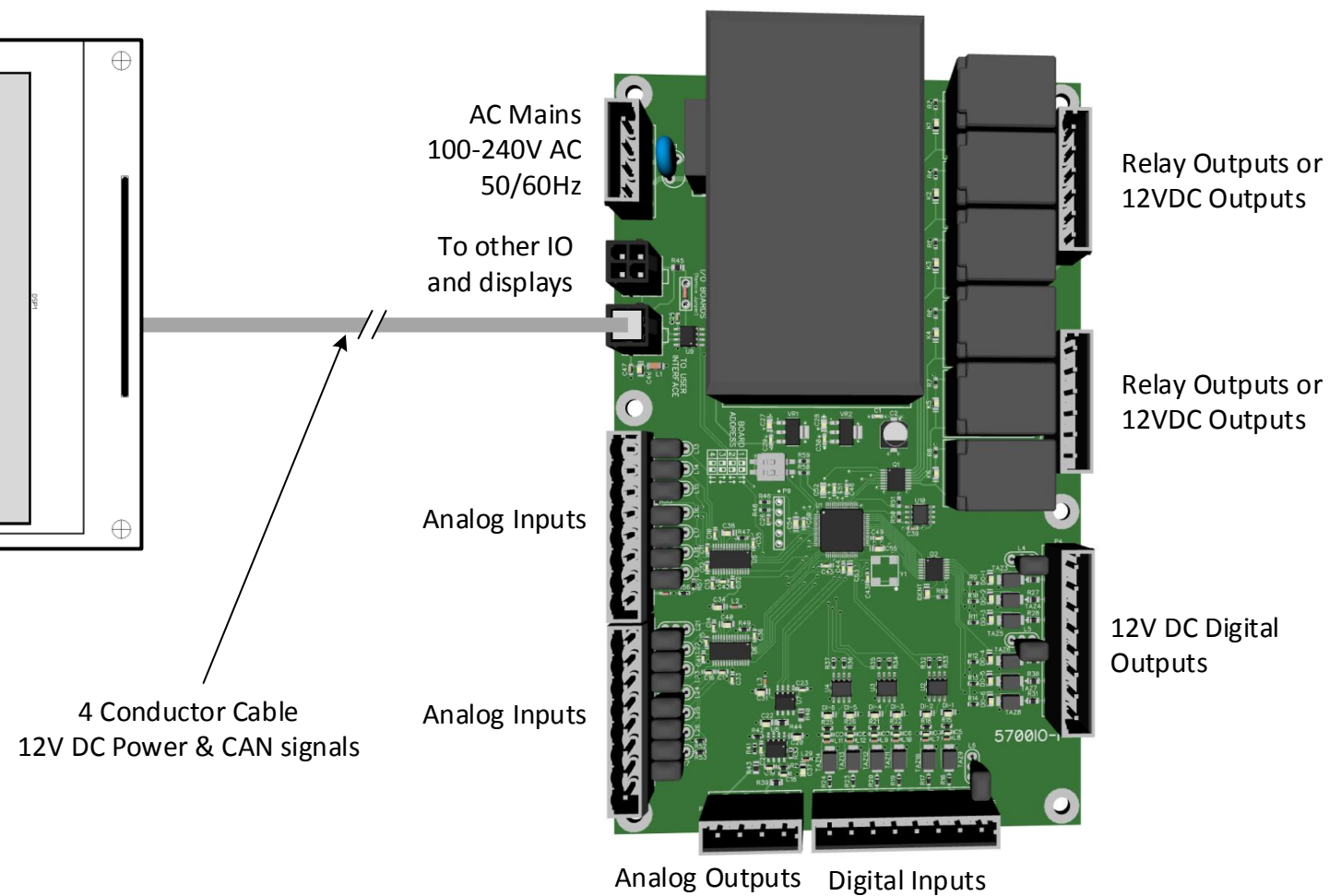
5700UI Board

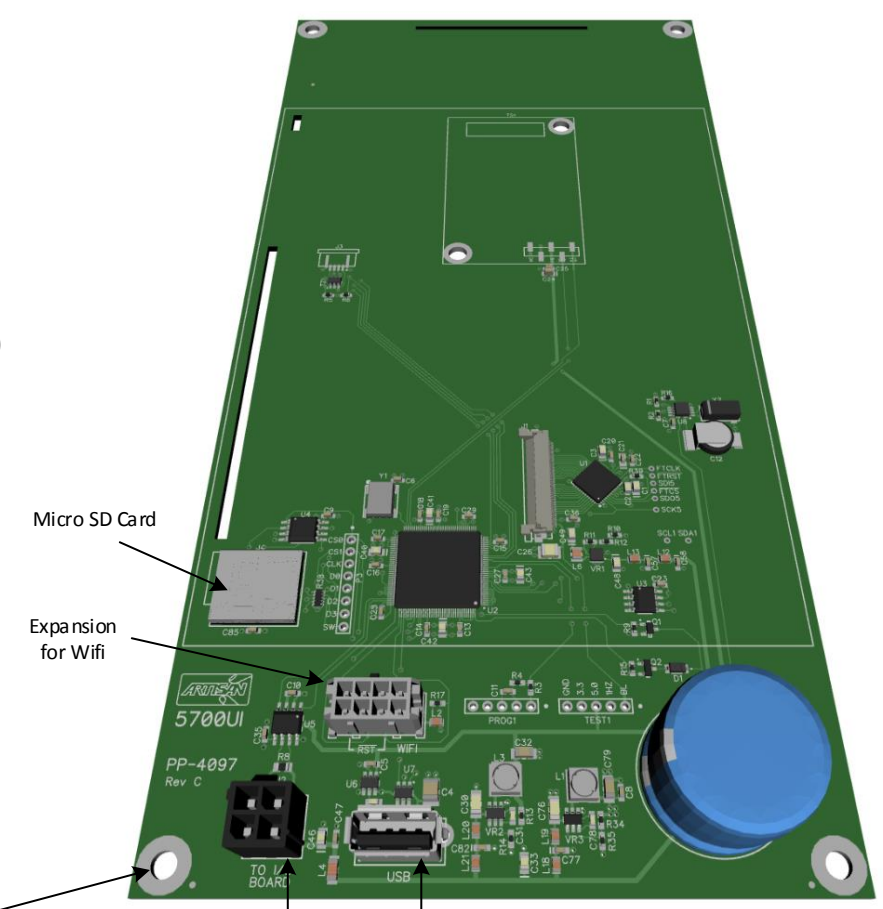
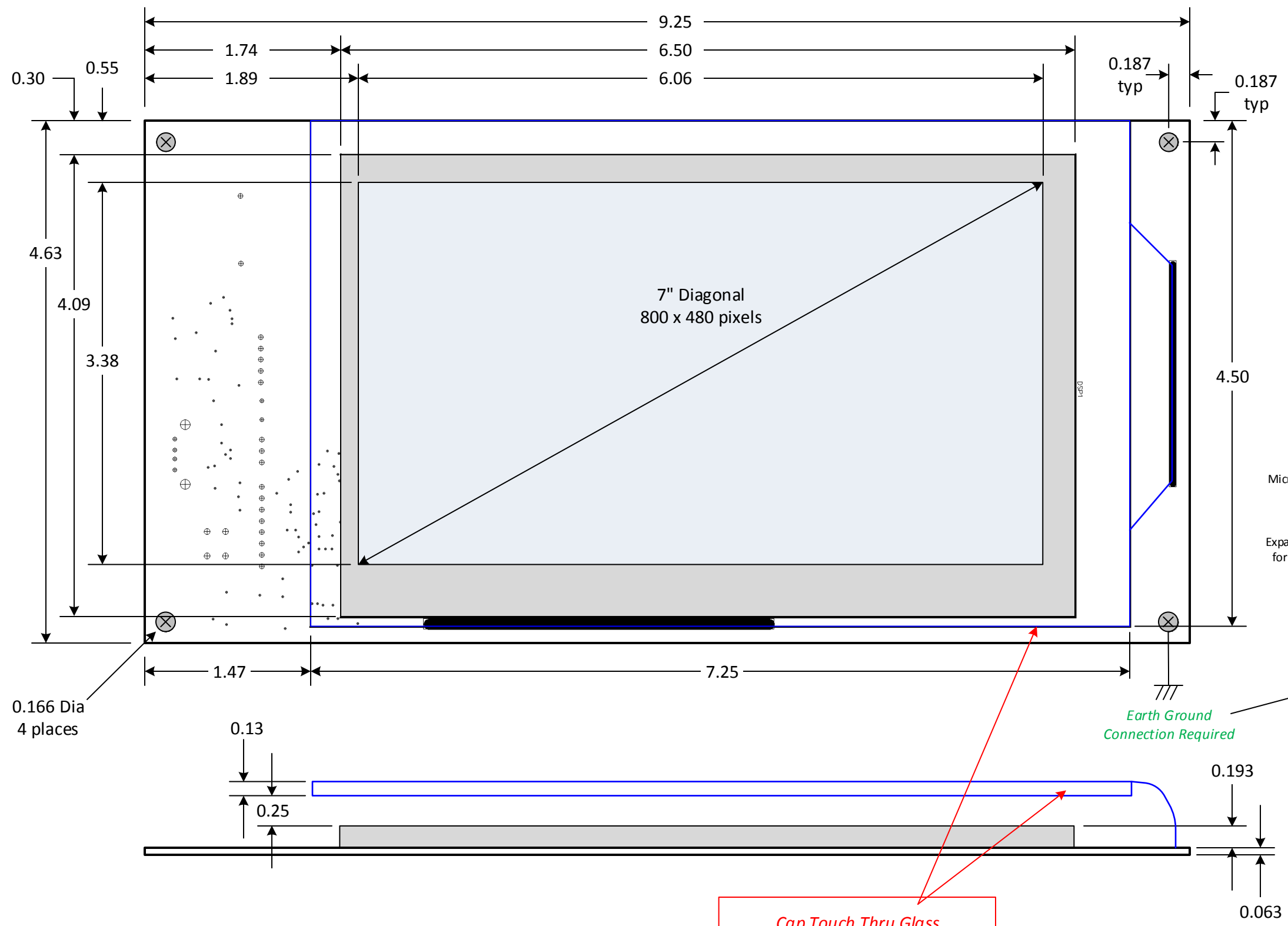
7" Diagonal LCD, 800x480 Pixels
Capacitive Touch Thru Glass or Resistive Touch
USB Port, Expansion port for WiFi



5700IO Board

(6) 10 Amp Relay Outputs or 12V DC Outputs
(6) 12V DC Outputs
(6) 12V Contact Inputs
(8) Analog Inputs, (6) Universal Temperature (RTD, T/C, Thermistor), (2) 0-10V DC Inputs
(2) Analog Outputs, 0-10V
100-240V AC Operating Power, 50/60Hz



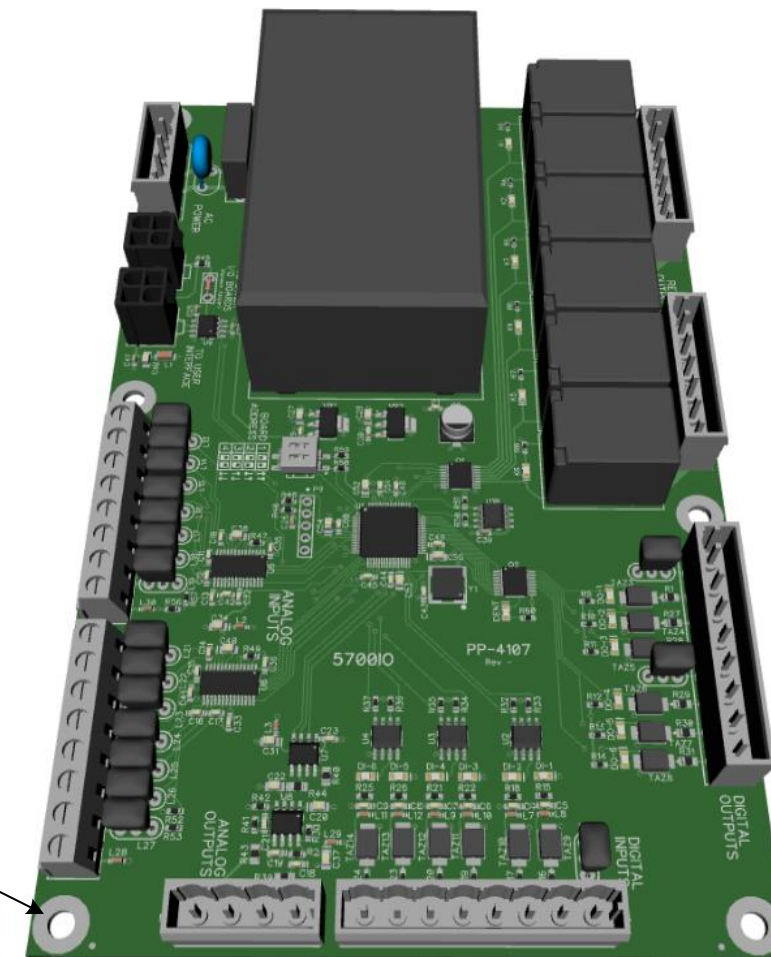
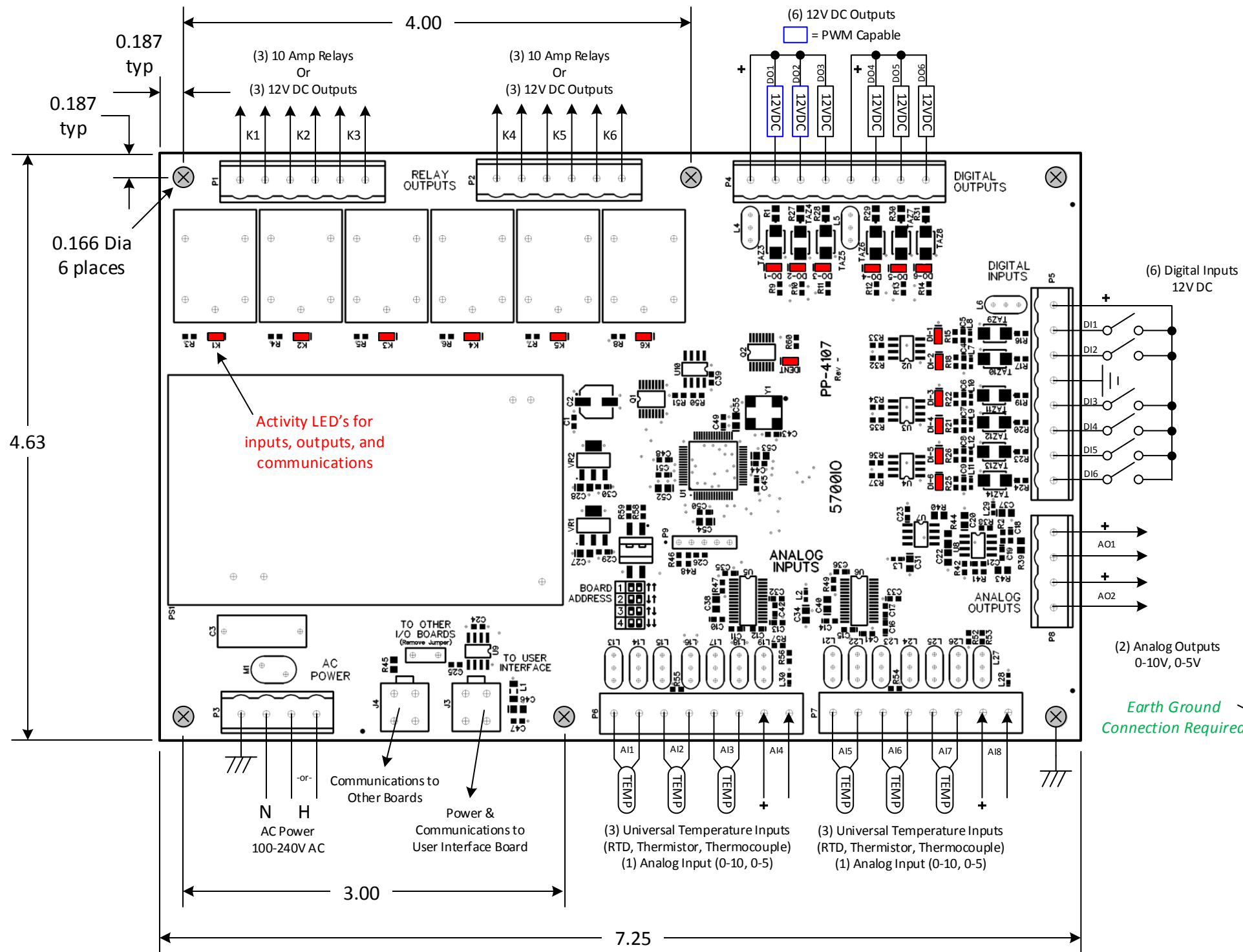


Earth Ground Connection Required

Cap Touch Thru Glass Sensor and Flex Tail MUST BE A MINIMUM of 0.25" AWAY FROM ALL GROUNDED METAL FOR PROPER OPERATION

User Interface Board

5700 Controller System



Input/Output Board