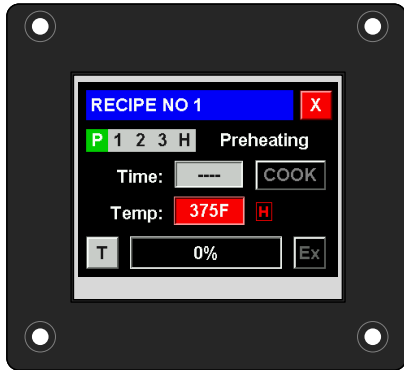




5400-006 Cooking Controller

The 5400-006 is a drop in replacement for the Artisan EPC-13811, also known as the BKI CP0046 rotisserie cooking controller.

The EPC-13811 Replacement Kit includes the 5400-006 controller plus an overlay



The 5400-006 controller is an upgrade to the EPC-13811 controller used in rotisserie ovens. This modern controller adds a *full color touchscreen* and a *USB port for importing and exporting recipes*.

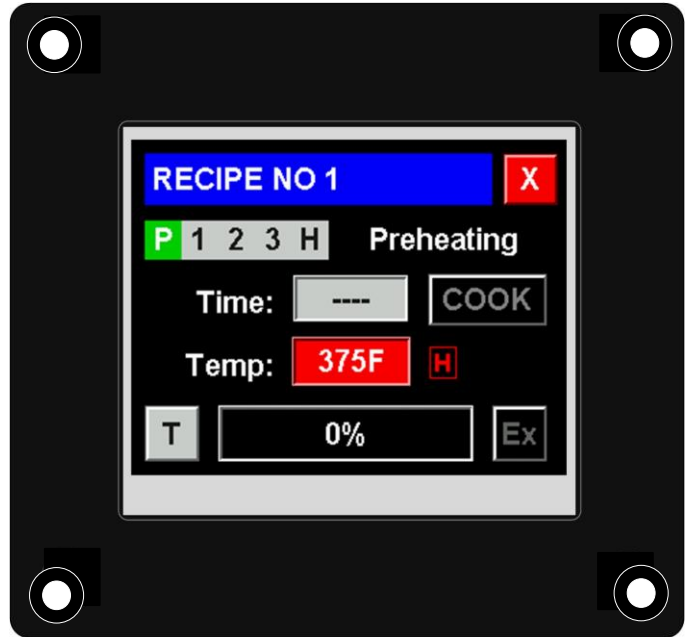
The mounting holes are identical to the EPC-13811, after removal of the EPC-13811 controller you can simply bolt the 5400-006 in its place. Once covered by the supplied overlay the oven is ready for use

REMOVE OLD CONTROLLER

INSTALL NEW CONTROLLER



EPC-13811



5400-006

Visit our website at: www.artisancontrols.com

Notice: Artisan Controls Corporation assumes no responsibility for customers applications or product design. The information and data contained herein is the sole and exclusive property of Artisan Controls Corporation. Any duplication, misuse, or conversion of this information without the express written consent of Artisan Controls Corporation is illegal and will result in damages including court costs and attorney fees being assessed against the party misusing this property

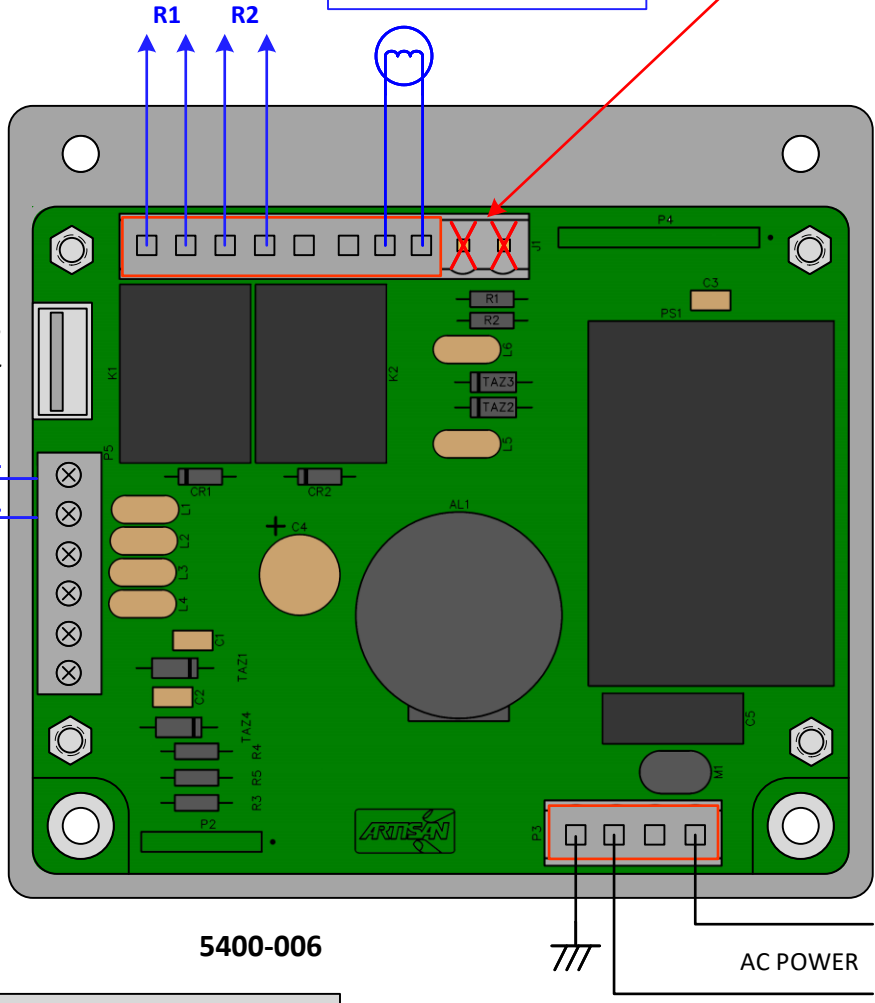


WARNING! The existing 8 pin plug MUST be plugged into the left side of the 10 pin socket or damage will result and the factory warrantee will be voided!

No change on relay output wiring

DC "passthru" oven lamp needs to change from 12V to 5V if installed

Probe wiring is identical



5400-006

AC POWER
L1
L2

With the 5400-006 controller installed, the temperature probe and 4 pin power plug connections are identical.

If the oven is a pass-thru type the oven lamp must be changed to a 5V rated lamp.

NO CHANGE ON POWER WIRING

Visit our website at: www.artisancontrols.com

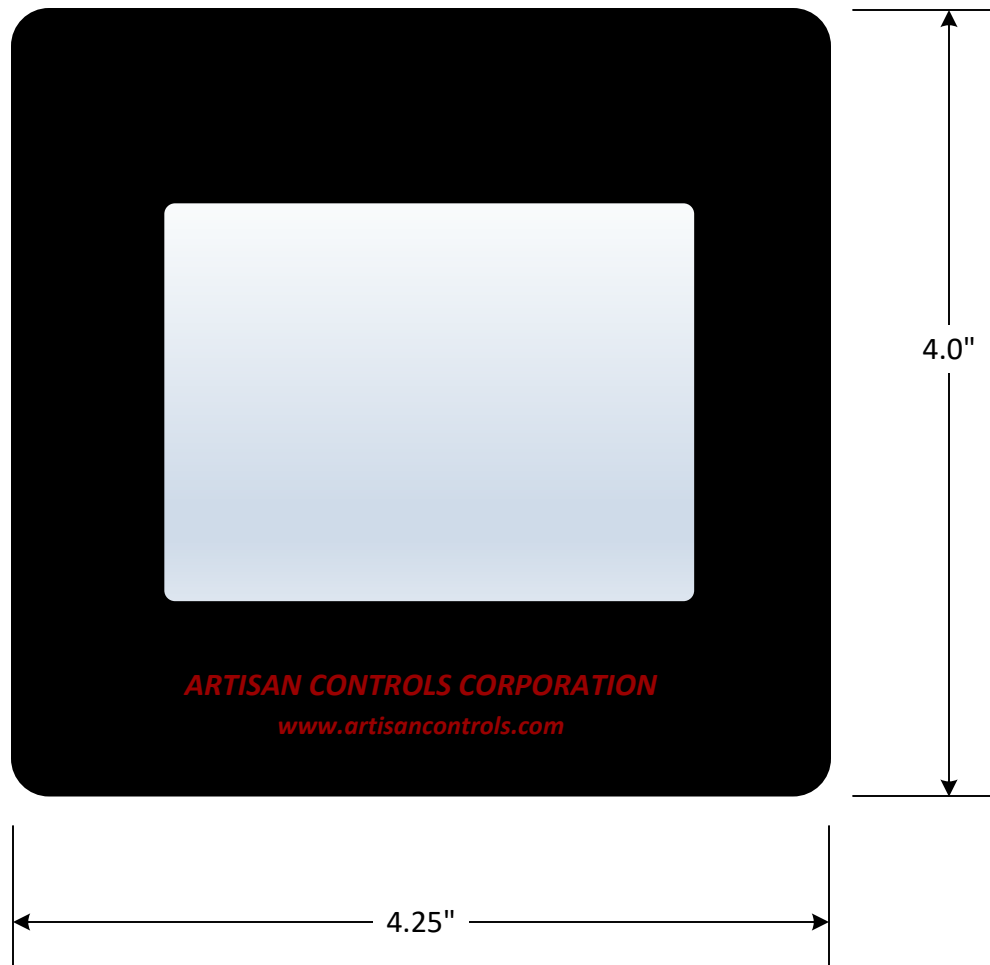
Notice: Artisan Controls Corporation assumes no responsibility for customers applications or product design. The information and data contained herein is the sole and exclusive property of Artisan Controls Corporation. Any duplication, misuse, or conversion of this information without the express written consent of Artisan Controls Corporation is illegal and will result in damages including court costs and attorney fees being assessed against the party misusing this property



Artisan Controls Corporation
Solid State Timers and Controllers Since 1965

The overlay provided in the EPC-13811 Replacement Kit is design to fit perfectly onto the front panel of the BKI VGG series of rotisserie ovens.

You simply peel the paper off of the back of the overlay, align the clear opening so the display shows through, then press it firmly into place.



Visit our website at: www.artisancontrols.com

Notice: Artisan Controls Corporation assumes no responsibility for customers applications or product design. The information and data contained herein is the sole and exclusive property of Artisan Controls Corporation. Any duplication, misuse, or conversion of this information without the express written consent of Artisan Controls Corporation is illegal and will result in damages including court costs and attorney fees being assessed against the party misusing this property

Tel: 973-598-9400 Fax: 973-598-9410 Toll Free: 800-457-4950
Artisan Controls Corporation, 111 Canfield Ave., Bldg B15-18, Randolph, NJ 07869